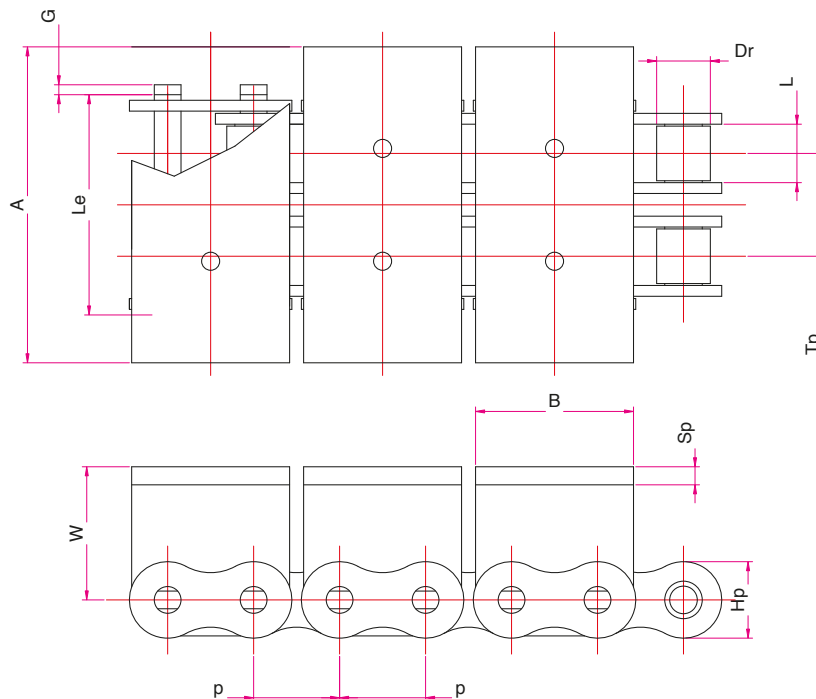
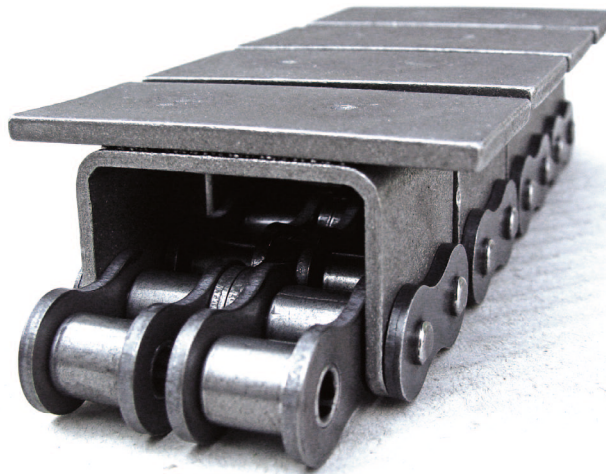


# CATENA ASA60/2 CON CAVALLOTTI E PIASTRE SUPERIORI SALDATE ASA60/2 CHAIN WITH TOP PLATES



Nostro codice Our code	Passo Pitch	Diámetro Rullo Roller Dia.	Larghezza interna Inner Width	Scartamento Transverse Pitch	Spessore Piast. Sup. Top Plate Thickness	Altezza Piastra Plate Height	Altezza Aletta Attachment Height	Lunghezza Perno Riveted Pin Length	Sporgenza Giunto Conn. Link Extension			Carico Rott. Medio Avg. Ultimate Strength	Superf. di Lavoro Working Surface	Peso Medio Avg. Weight
	P	Dr	L	Tp	Sp	Hp	W	Le	G	A	B	kg	mm <sup>2</sup>	kg/mt
	mm	mm	mm	mm	mm	mm	mm	mm	mm	mm	mm			
ASA60/2TAP	19,05	11,91	12,70	22,78	4	17,5	29,5	48,8	2,2	70	35	7,600	210	6,83